

ELECTRIC ARTICULATING BOOM LIFTS

AB22EJ PLUS (AB710EJ PLUS)

Compliant with CE/EAC/AS standards



PRODUCT HIGHLIGHTS

Outstanding Strength Both Indoors and Outdoors

- Smooth off-road and quiet indoor operation
- 4WD, 40% gradeability
- Standard active oscillation, excellent flexibility

Excellent Performance, Safety and Reliability

- Smart display for easy machine status and fault diagnosis
- Auxiliary power system
- Rexroth controller comply with ISO13849 standard

Comfortable and Efficient

- The main boom and secondly boom are equipped with angle sensors, to automatically reduce speed and act as a buffer
- Proportional steering speed reduction technology



Standard Features		
Active oscillating function	5-in display screen	4WD × 2WS
Proportional control with 3 joysticks	Automotive-grade sleeves for all pipes	Emergency lowering system
Hydraulic platform leveling	Max tilt rating to 5°	Weighing system
Tilt protection system	White noise alarm	Telematics-ready connector
Flashing beacon	Battery isolator	Fault diagnosis system
Secondary guarding device	2.44 m(8') platform with swing gate	Half mesh (For platform with swinging gate)
Options & Accessories		
AC power to platform	Platform work light	
1.83 m (8')/2.44 m (8') platform with swinging gate	Glazier kit(for platform with swinging gate)	
1.45m (4'9") platform		

SINOBOOM™

PARTNERS IN ACCESS™

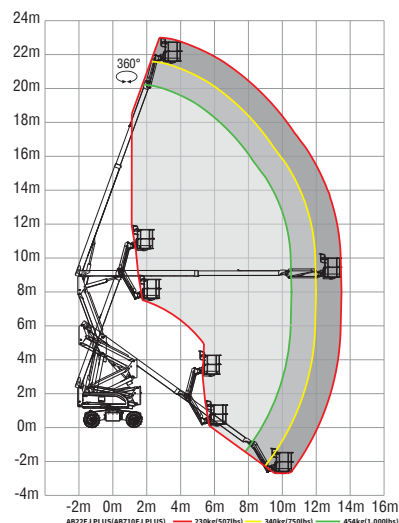
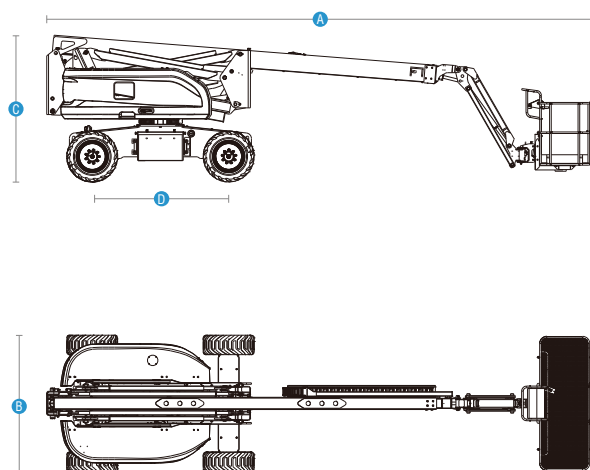
SINOBOOM.COM | SALES@SINOBOOM.COM
32-34 Marni Street, Dandenong South, VIC Australia 3175

ELECTRIC ARTICULATING BOOM LIFTS

AB22EJ PLUS (AB710EJ PLUS)

Compliant with CE/EAC/AS standards

Model	AB22EJ PLUS (AB710EJ PLUS)
Dimensions	
Max Platform Height	21.6 m (70'10")
Max Working Height	23.6 m (77'5")
Max Horizontal Reach (230 kg,340 kg,454 kg)	13.4 m/11.9 m/10.45 m (44'/39'/34'3")
Max Up and Over Clearance	8.9 m (29'2")
A Stowed Length	9.95 m (32'8")
B Stowed Width	2.49 m (8'2")
C Stowed Height	2.68 m (8'10")
Stowed Length (Transport)	7.73 m (25'4")
Stowed Width (Transport)	2.49 m (8'2")
Stowed Height (Transport)	2.95 m (9'8")
D Wheelbase	2.49 m (8'2")
Ground Clearance	0.39 m (1'3")
Platform Size (L×W×H)	2.44×0.91×1.1 m (8'×3'×3'7")
Performance	
Max Platform Capacity (Unrestricted/Restricted)	230 kg (507 lbs)/340 kg (750 lbs)/450 kg (1,000 lbs)
Max Platform Occupants(Unrestricted/Restricted)	2 persons/ 3 persons
Drive Speed (Stowed)	0~4.8 km/h (0~3 mph)
Drive Speed (Raised)	0~1.1 km/h (0~0.68 mph)
Gradeability	40%
Turntable Rotation	360°/ Continuous
Platform Rotation	180°
Tilt Rating	5°
Turning Radius (Inside/Outside)	2.4 m/5.55 m (7'10"/18'3")
Turntable Tail-Swing	0.84 m (2'9")
Max Allowable Side Force	400 N (90 lbf)
Max Allowable Wind Speed	12.5 m/s (28 mph)
Tire Spec/Type	355/55D625 Foam-filled
Power	
Drive × Steer	4 WD × 2 WS
Batteries	48 V, 480 Ah (lead acid battery) 48 V, 500 Ah (lithium battery)
Hydraulic Tank Capacity	130 L (28.6 gal (UK)/34.3 gal (US))
System Voltage	12V DC
Weight	
Weight	10,900 kg (24,030 lbs)
Standards Compliance	
CE/EAC/AS	



Auckland, Head Office
6-10 Parkway Drive,
Mairangi Bay,
Auckland
(+64) 09 443 2436
sales@yrco.co.nz

Auckland, Mt Wellington
20L Sylvia Park Road,
Mt Wellington,
Auckland
(+64) 09 553 5470
salesmtwell@yrco.co.nz

Waikato
3/31 Chafer Place,
Te Rapa,
Hamilton
(+64) 07 595 0245
saleswaikato@yrco.co.nz

Wellington
8 Broken Hill Road,
Porirua,
Wellington
(+64) 04 212 2456
saleswell@yrco.co.nz

Christchurch
20 Nga Mahi Road,
Sockburn,
Christchurch
(+64) 03 341 6923
saleschch@yrco.co.nz

4C+
CELEBRATING
OVER 40 YEARS
IN BUSINESS

**YR Youngman
Richardson**