

# Mini Excavator

## HD35V5

A 3.6 ton zero tail swing mini excavator  
with exceptional performance



# Mini Excavator

# KATO

## HD35V5

A 3.6 ton zero tail swing mini excavator with exceptional performance

### Features

- Newly designed operator's space
- Powerful digging & quick response
- Zero tail swing
- Easy maintenance
- Low fuel consumption

### Safety

- Gate lock system
- Neutral engine start
- ROPS / FOPS cabin or canopy
- Auto parking brake in swing & traction motors

### Durability

- Easily adjustable pins for longer life
- Castle nuts for boom & arm joints
- Single structured swing pin

### Easy Maintenance

- Large side covers for easy access & maintenance
- Wide, fully opening engine cover enables ease of maintenance
- Filters are conveniently located - Includes:  
Large fuel filter, water separator & tank breather



**SPANNER\***  
INCLUDES

### Comfortable Operating Room



**Centralised switches** - includes key start, throttle dial, auto idle & eco mode



**Easily visible monitor** - includes travel speed, auto idle, eco mode, hour meter & engine management



**Full suspension seat**  
- c/w retracting seat belt



**Control Lever with proportional switch for auxiliary hydraulic**



**Traction foot pedals (fold away)**





Easy maintenance



Large rear access for easy engine maintenance



Large side cover for easy service access



Water separator with indicator

Safety



Gate Lock System



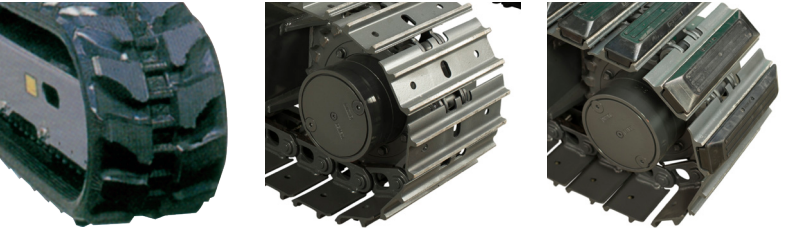
ROPS Canopy (Option)

Durability



Single-structured Swing Pin

Track options



Rubber Tracks / Steel Track / Rubber Pad Options

Easy skimming work



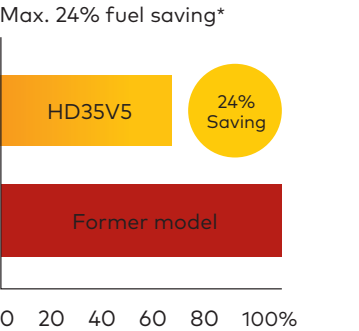
Close distance between Bucket Tooth and Dozer Blade

Easy fuel refilling

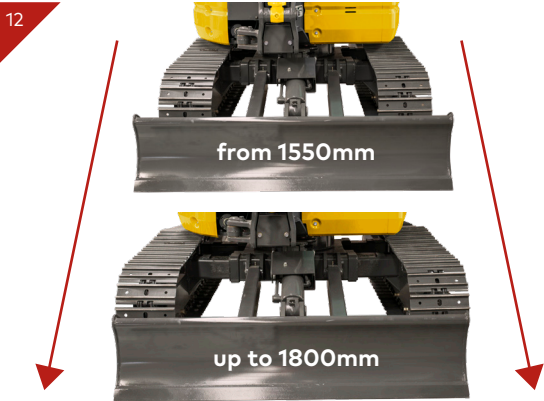
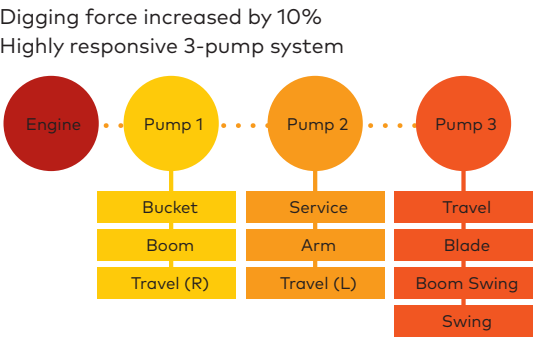


Fuel refill located in a convenient position

Lower Fuel Consumption



High Digging Power & Quick Response



**Quick pattern changer (optional)**  
**Retractable dozer blade extension (optional)**  
The blade width can be easily adjusted, offering you the flexibility to fit the job. Adjustment is simple and easy with the two fastening pins.

**Equipped with expanding tracks\***  
With the widest ranging spanners in its class, the machine can access into tight spaces to ensure a very high level of work performance.

# HD35V5

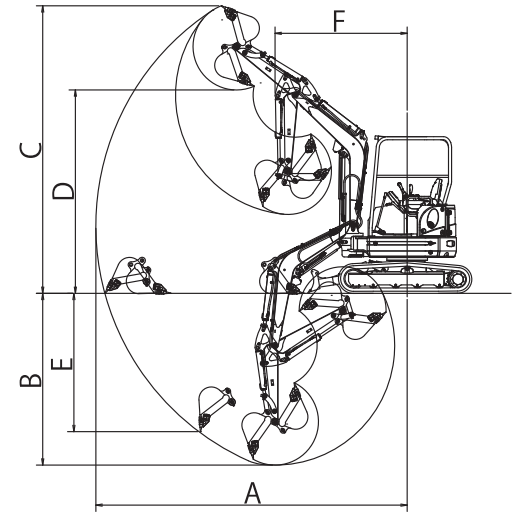
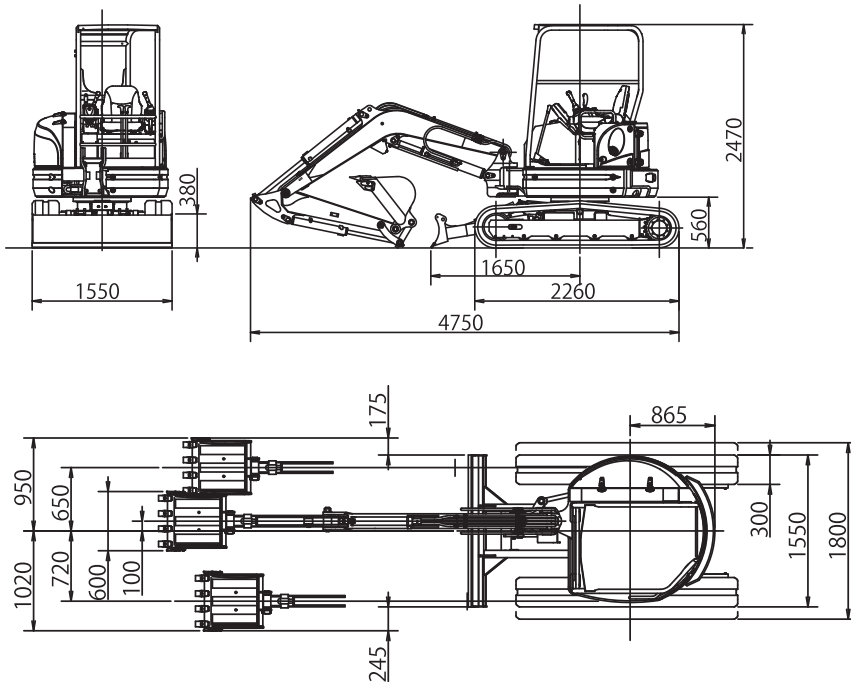
## Mini Excavator



### SPECIFICATIONS

Dimensions (mm)

Working Range (mm)



#### STANDARD

- ROPS cabin
- Auxiliary piping
- Flashing light
- Removable counter weight
- Rubber tracks

#### OPTIONS

- ROPS canopy
- Steel tracks
- Rubber pads
- Short arm
- Less counterweight

|                                | Standard | Option (short arm) |
|--------------------------------|----------|--------------------|
| A. Max. digging radius         | 5540     | 5260               |
| B. Max. digging depth          | 3380     | 3080               |
| C. Max. digging height         | 5020     | 4930               |
| D. Max. dumping height         | 3540     | 3430               |
| E. Max. vertical digging depth | 2750     | 2470               |
| F. Min. front turning radius   | 2200     | 2160               |
| At right boom swing            | 1910     | 1870               |

| Performance                          |                                      | Boom swing system                     |  |
|--------------------------------------|--------------------------------------|---------------------------------------|--|
| Bucket capacity                      | 0.11m <sup>3</sup>                   | Type                                  | Boom offset with hydraulic cylinder                            |
| Bucket width (Standard)              | 600mm                                | Swing angle (L/R)                     | 80°/50°  |
| Operating weight: 4-Post(Cabin)      | 3525 (3675) kg                       | Hydraulic system                      |  |
| Transportation weight: 4-Post(Cabin) | 3450 (3600) kg                       | Pressure                              | 24.5MPa 250kgf/cm <sup>2</sup> /20.6MPa 210kgf/cm <sup>2</sup> |
| Swing speed                          | 9.0min <sup>-1</sup>                 | Pump hydraulic flow                   | 37.4 L/minx2+ 23.1L/min  |
| Travel speed (low/high)              | 2.7 / 4.7km/h                        | Dozer blade                           |  |
| Gradeability                         | 58% (30°)                            | Size                                  | 1550x380mm   |
| Ground pressure                      | 29kPa (0.30kgf/cm <sup>2</sup> )     | Lift above ground / Drop below ground | 385mm / 430mm  |
| Max bucket digging force             | 29.1kN (2970kgf)                     | Max auxiliary flow                    |  |
| Engine                               |                                      | 1st Auxiliary line                    | 61L/min  |
| Model                                | YANMAR 3TNV88                        | 2nd Auxiliary line                    | 23L/min (Option)   |
| Rated output (EU version)            | 17.5kW 23.8PS /2200min <sup>-1</sup> |                                       |  |
| Fuel tank capacity                   | 42L                                  |                                       |  |

### PARTS AND SERVICE

We are proud of the back-up service we offer to customers. The importance of stocking genuine spare parts for all the equipment we supply is a high company priority.



**Auckland, Head Office**  
6-10 Parkway Drive,  
Mairangi Bay,  
Auckland  
(+64) 09 443 2436  
sales@yrco.co.nz

**Auckland, Mt Wellington**  
20L Sylvia Park Road,  
Mt Wellington,  
Auckland  
(+64) 09 553 5470  
salesmtwell@yrco.co.nz

**Waikato**  
3/31 Chafer Place,  
Te Rapa,  
Hamilton  
(+64) 07 595 0245  
saleswaikato@yrco.co.nz

**Wellington**  
8 Broken Hill Road,  
Porirua,  
Wellington  
(+64) 04 212 2456  
saleswell@yrco.co.nz



**Christchurch**  
20 Nga Mahi Road,  
Sockburn,  
Christchurch  
(+64) 03 341 6923  
saleschch@yrco.co.nz